

Featuring exclusive snap-mount adapter plate for easy installation and inventory reduction.



# MULT-E Kit<sup>®</sup>

Compact Fluorescent Ballast Replacement Kit  
The simple solution for replacement confusion

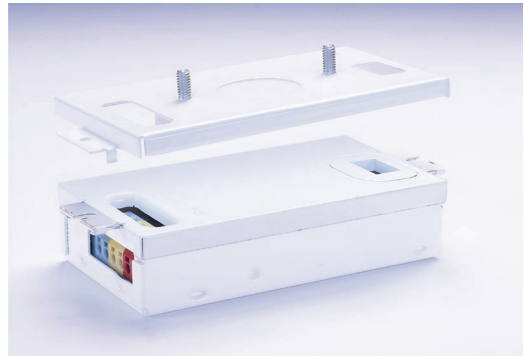
# Universal™ CFL **MULT-E Kit**®

## Replaces Three SKUs With One Versatile Kit

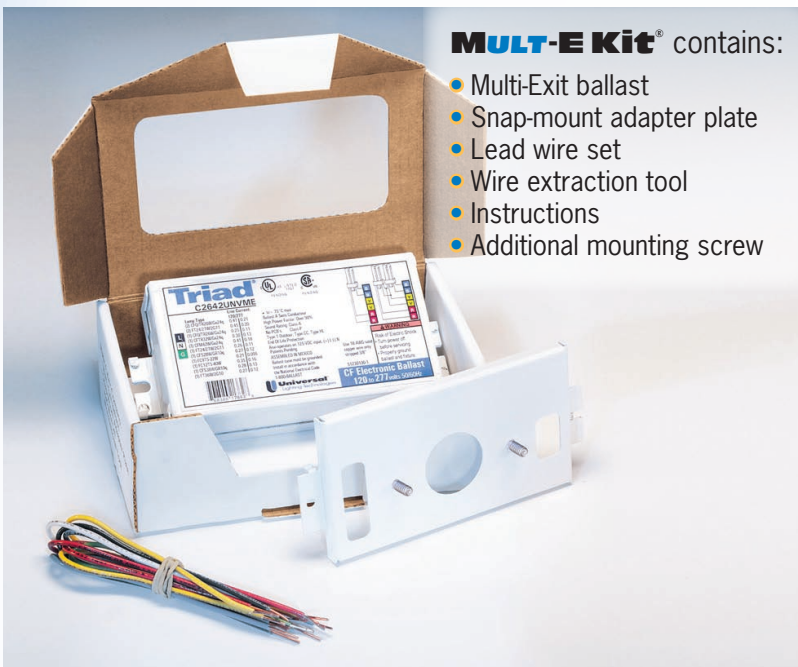
Our snap-mount adapter plate makes CFL ballast replacement simpler than ever!

**Universal**™ Lighting's new **MULT-E Kit**® offers multiple mounting connections for the wide variety of compact fluorescent fixtures available today. It's the ideal replacement solution for virtually every installed CFL application.

**MULT-E Kit**® gives you multi-exit configurations for both side-exit and bottom-exit replacement applications. Our unique snap-mount adapter plate provides mounting studs when required and allows for center hole lead-exit replacements. **MULT-E Kit**® installs faster than most replacement ballasts because there's no additional hardware required for adapter plate use.



The snap-mount adapter plate provides quick attachment with no additional hardware.

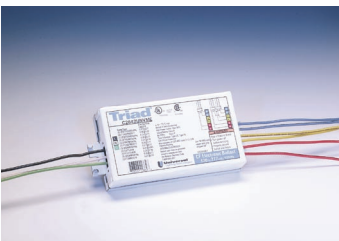


**MULT-E Kit**® contains:

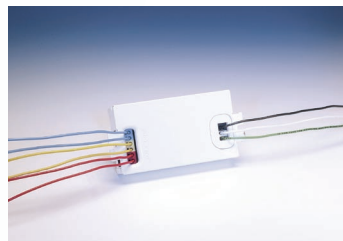
- Multi-Exit ballast
- Snap-mount adapter plate
- Lead wire set
- Wire extraction tool
- Instructions
- Additional mounting screw

## Versatile Wiring and Mounting Configurations

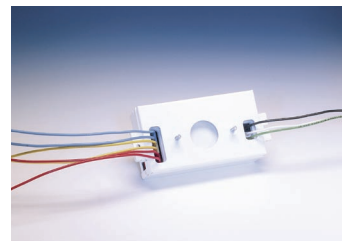
- Fits virtually every J-Box cover and fixture application



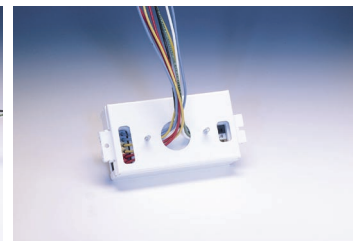
Side lead exit



Bottom lead exit



Bottom lead exit with studs



Bottom lead center exit with studs

# Triad<sup>®</sup> Electronic CFL Ballast

## Features and Benefits

- Universal input voltage (108 – 305 volts, 50/60Hz)
  - Installer-friendly; ensures you have the right ballast every time
  - Reduces inventory costs and requirements
- 1- or 2-lamp operation of multiple lamp applications
- End-of-lamp life shutdown circuit for safe operation
- Auto-reset of lamp after shutdown
  - Lets you replace lamp without turning off power
- THD<10%; Power Factor >.98
- Programmed Rapid Start (PRS) to maximize lamp life
- Cool operation extends ballast life
- Low-temperature starting down to 0°F
- Color coded terminals for wiring simplicity
- White case to eliminate ballast shadows



## Cross Reference Chart

MULT-E Kit <sup>®</sup>	Universal <sup>™</sup> /Magnetek	Advance	Osram	Robertson	ESI
C213UNVME000K	C213UNVSE000K/BE/BES	ICF-2S13-H1-LD	QTP 1/2x13CF/UNV	PSM213CQMV	ES-2/1-CFQ-13/10-UNV-C/D ES-2/1-CFQ-13/10-UNV-C/D ES-1-2D-16/10-UNV-D
C218UNVME000K	C218UNVSE/BE/BES	ICF-2S18-H1-LD REL-2Q18 VEL-2Q18 R-2Q18-4P-TP V-2Q18-4P-TP	QTP 1/2x18CF/UNV	PSM218CQMV	ES-2/1-CFQ-18-UNV-C/D ES-1-2D-21-UNV-D
C2642UNVME000K	C2642UNVSE/BE/BES C132SR120BE C132SR277BE C226SR120BE C226SR277BE	ICF-2S26-H1-LD REL-1T32 VEL-1T32 REL-1T42 VEL-1T42	QTP 1x26/32/42CF/UNV QTP 2x26/UNV QTP 1/2xCF/UNV	PSM226CQMV	ES-2/1-CFQ-26-UNV-C/D ES-1-CFH-42/32/26-UNV-C/D ES-1-T5C-40/22-UNV-D



# CFL MULT-E Kit<sup>®</sup>

# CFL **MULT-E Kit**®

reduces your inventory requirements  
and simplifies your CFL ballast orders!

- Installer-friendly universal input voltage (108 – 305 volts)
- You're always wired to the right voltage
- Multiple mounting configurations with just one ballast kit
- No need to worry about ordering the wrong mounting configuration – they're all covered
- Three ballasts cover 25 lamp applications



Catalog Number	UPC Code	Lamp Applications
<b>C213UNVME00K</b>	76838623828	(1) or (2) 13 Watt Quad (1) or (2) 13 Watt Multi (1) or (2) 10 or 16 Watt 2D
<b>C218UNVME00K</b>	76838623827	(1) or (2) 18 Watt Quad (1) or (2) 18 Watt Multi (1) or (2) 21 Watt 2D
<b>C2642UNVME00K</b>	76838623829	(1) or (2) 26 Watt Quad (1) or (2) 26 Watt Triple (1) 32 Watt Triple (1) 42 Watt Multi (1) or (2) 24 Watt Twin Tube (1) 36 Watt Multi (1) 28 Watt 2D (1) 38 Watt 2D (1) 22 Watt Circline (1) 40 Watt Circline

## It's Easy To Reach Us...

Phone: 1.800.225.5278  
Fax: 1.800.206.0035

Website: [www.unvlt.com](http://www.unvlt.com)

Email: [webmaster@unvlt.com](mailto:webmaster@unvlt.com)

Universal Lighting Technologies, Inc.  
26 Century Blvd., Suite 500  
Nashville, TN 37214-3683

For Technical Engineering Services (TES), application support and warranty information, call 1.800.BALLAST. All specification information is subject to change without notification.

CFLME0709

\*For specific application and warranty information, visit our website at [www.unvlt.com](http://www.unvlt.com)

