

Product Specification



Model : 82223

Key Features

- ▼ G10q Lamp Holder
- ▼ Operates 2 Lamp
- ▼ Lamp Type:
FC8T9 22W & FC12T9 32W
- ▼ End of Life Protection
- ▼ Missing Lamp Protection
- ▼ UL/CUL Listed (E207020)
Outdoor Type 1
- ▼ Class P
- ▼ FCC Compliance—FCC 47 CFR
Part 18
- ▼ Energy Star Qualified
☆ (qualified date)
- ▼ Transient Protection
- ▼ Sound Rating Class A

Application

- ▼ Ceiling Fan
- ▼ Floor Lamps
- ▼ Ceiling Mounted Fixtures
- ▼ Decorative Fixtures

System Life

- ▼ 10,000 Hours Avg. Lamp Life
- ▼ 40,000 Hours Avg. Ballast Life
(Recommend Operating Case
Temperature: 75°C)

System Warranty

- ▼ 2 Years Warranty



- ✓ Energy Star 4.1
- ✓ UL Listed
- ✓ T-24
- ✓ ISO 9001

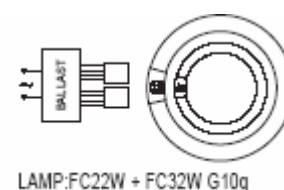
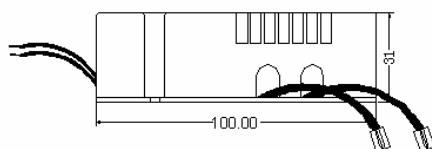
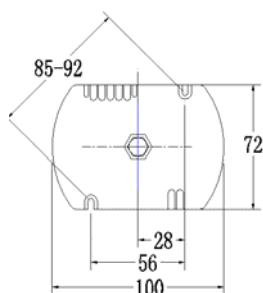
Ballast Specification

Input Voltage (V)	120	Recommend Hotspot Temp.(°C)	75	Operating Frequency (KHz)	28
Input Frequency (Hz)	60	Operation Temp (°C)	-18~50	Crest Factor	≤1.65
Input Current (Amp)	0.88	Ballast Factor	≥0.95	Circuit Type	Series
Rated Wattage (Watt)	54	Lamp Voltage (V)	FC22 62	Lamp Voltage (V)	FC32 84
Power Factor (PF)	≥0.50	Lamp Current (mA)	350	Lamp Current (mA)	380
Harmonic Distortion (%)	≤160	Filament Current (mA)	150	Filament Current (mA)	200
Min. Start Temp. (° C)	-18	Cathode Current (mA)	400	Cathode Current (mA)	420
Dimming Range	N/A	Max O.C.V (V)	400	Max O.C.V (V)	500
Starting Method	Rapid Start	Starting Time (S)	≤1	EOL Motion Time (S)	≤10

System

82223+FC22&FC32 (2700K\3000K)	Rated Lumens (Lm)	3300	Lumen Efficiency (Lm/W)	62
☆ 2006. 1. 20 \ ☆ 2005. 8. 1	CRI	82	Color Oval	≤5
82223+FC22&FC32 (3500K)	Rated Lumens (Lm)	3168	Lumen Efficiency (Lm/W)	58
☆ 2005. 8. 15	CRI	82	Color Oval	≤5

Dimensions	MOL (mm)	100	MOW (mm)	72	MOH(mm)	31
Installation	(IPS) Thread Dimension	1/8-27 NPSM×1	3mm Screw×2			



Issued: 2006-4-4

Revised: Revised: 2010-2-1